

# HOLLOWAY CRESCENT LEADEN RODING

Proposed affordable housing development  
Holloway Crescent Leaden Roding Essex for  
Chelmer Housing Partnership.

## Sketch Scheme 5

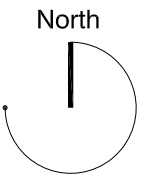
scale 1:500 1:2500



Site Plan scale 1:500



Location Plan scale 1:2500



### Development Summary

Affordable dwellings for rent:

Plot no:	Type:	Floor Area:	Qty:
1,2	Two Bed Houses	76 m <sup>2</sup>	2 nr.
3,4	Three Bed Houses	86 m <sup>2</sup>	2 nr.
5,6,7	Two Bed Bungalows	57 m <sup>2</sup>	3 nr.
	<b>total:</b>		7 nr.
	Total Site Area	0.22 Ha	
	Density	32 / Ha	
	Parking Spaces	13	